

FCT-TF

FLOATING CEILING TRIM

SAMPLE SPECIFICATION

specify as: SOFTFORMS®

Model # FCT-TF

Pitcon

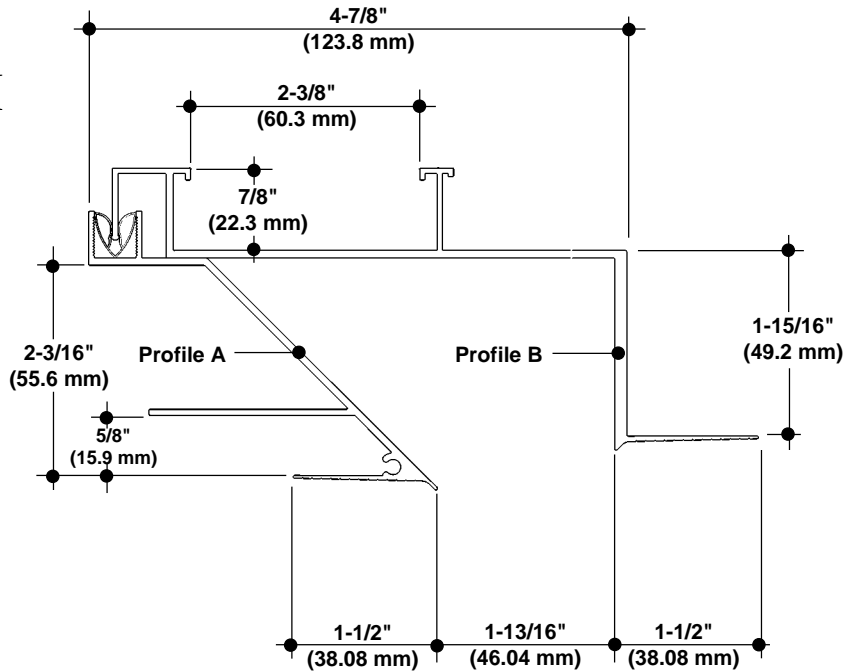
6409 Rhode Island Avenue
Riverdale, MD 20737
(800) 637-7638
(301) 927-1000
Fax: (301) 699-8690

LLC

3330 W. Flower Street
Phoenix, AZ 85017
(800) 637-7638
(602) 233-9100
Fax: (602) 233-9400

The extruded aluminum profiles shall incorporate continuous integral fins for surface contact to conventionally installed gypsum drywall. The tape & spackle fins shall be 1-1/2" wide and shall be tapered to the edge. A series of continuous grooves shall be extruded into the face of the fins to provide greater bonding surface.

The extruded profiles shall be primed with corrosion-resistant primer compatible with materials normally in use in conjunction with commercial interiors, i.e.: joint compound, latex and enamel paints, and wall covering adhesives.



MATERIAL: Aluminum Alloy.....6063 T5 or equal
Finish.....Factory primed

FCT-TF FLOATING CEILING TRIM

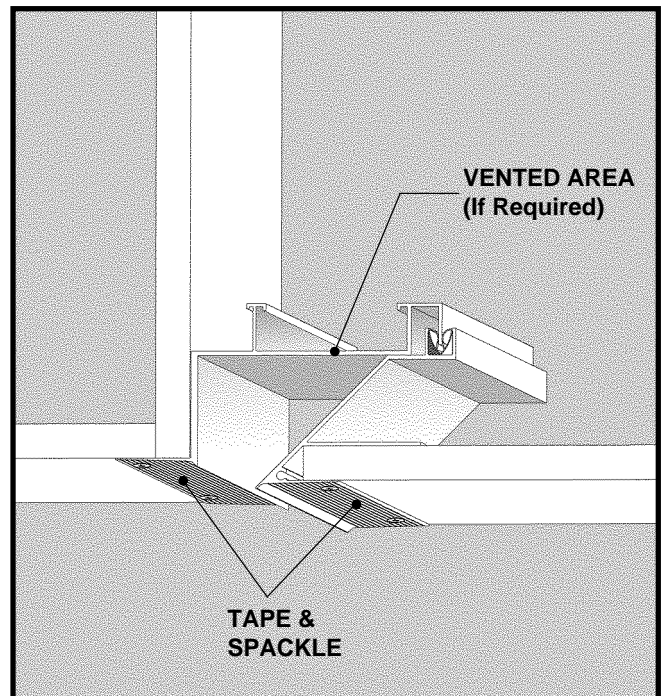
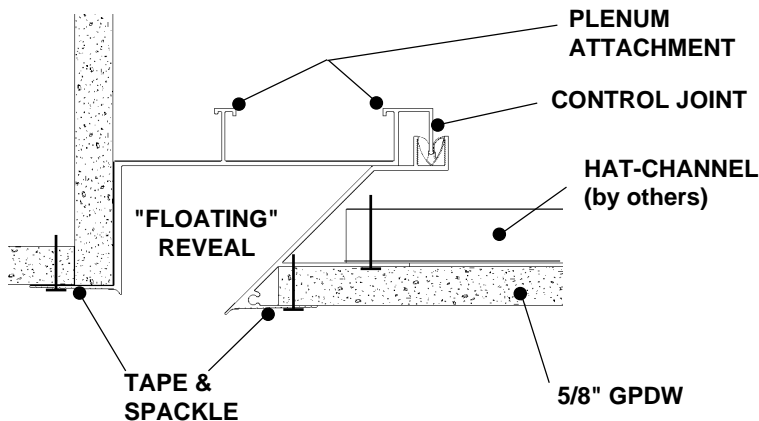
NO SCALE SECTION

EXAMPLE DETAIL

For use with conventional metal stud construction and 5/8" GPDW only.

The FCT-TF Floating Trim permits the introduction of a soffit-edge reveal with a deep recess. The control-joint gasket allows for expansion and contraction at the reveal: nominal reveal width is 1-13/16". Profile B is provided with a snap-in plenum attachment. Optional venting can be provided for an open area up to 18-1/2 square inches per linear foot.

Screws through the grooved fins must always engage metal or wood substructure to ensure proper installation.



FCT-TF FLOATING TRIM @ CEILING

NO SCALE SECTION

© 2007 Pitcon Industries

2090 Del Rio Way, Unit B
Ontario, CA 91761
Phone: (909) 773-0001
Fax: (909) 773-0091

3330 W. Flower Street
Phoenix, AZ 85017
Phone: (602) 233-9100
Fax: (602) 233-9400

Pitcon Industries
DIVISION OF PITCON ARCHITECTURAL METALS, LLC
800 637-7638

6409 Rhode Island Ave.
Riverdale, MD 20737
Phone: (301) 927-1000
Fax: (301) 699-8690