

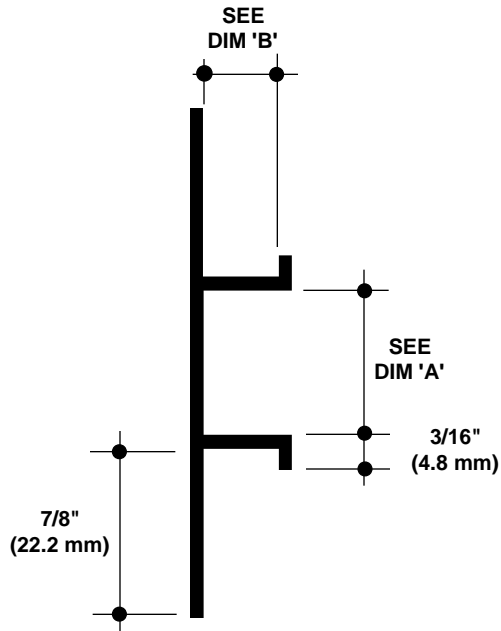
DCS SERIES CHANNEL SCREED

Specify as: Pittcon Plaster Molding

Model No. DCS-xx-xxx
DCS-xx-V-xxx (vented)

MATERIAL: Aluminum alloy.....6063 T5
Finish.....Clear Anodized
Thickness......050" nominal

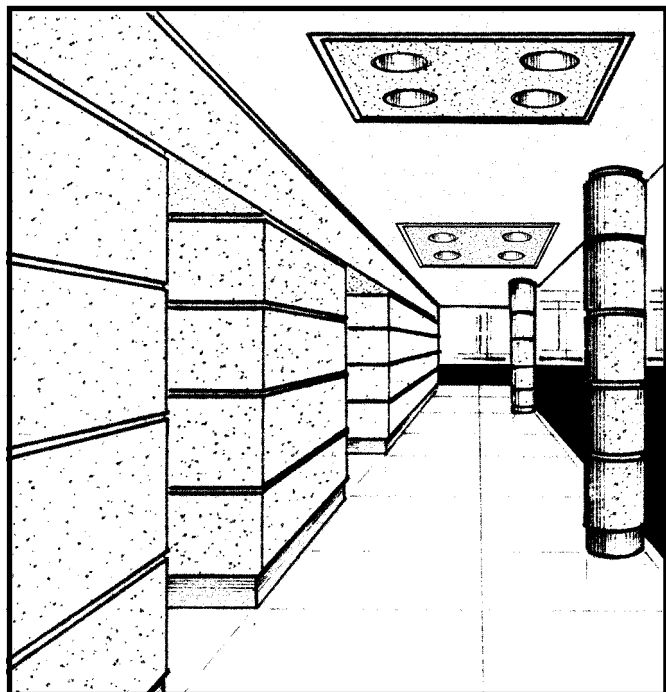
Many optional finishes are available. Consult factory for pricing and availability. Finishes meet or exceed AAMA standards for scratches or blemishes.



NO SCALE

TYPICAL SECTION

Model No.	Width-Dim 'A'	Depth-Dim 'B'
DCS-50-50	1/2" (12.7mm)	1/2" (12.7mm)
DCS-50-V-50	1/2" (12.7mm)	1/2" (12.7mm)
DCS-50-75	3/4" (19.1mm)	1/2" (12.7mm)
DCS-50-V-75	3/4" (19.1mm)	1/2" (12.7mm)
DCS-50-100	1" (25.4mm)	1/2" (12.7mm)
DCS-50-V-100	1" (25.4mm)	1/2" (12.7mm)
DCS-50-150	1-1/2" (38.1mm)	1/2" (12.7mm)
DCS-50-V-150	1-1/2" (38.1mm)	1/2" (12.7mm)
DCS-50-200	2" (50.8mm)	1/2" (12.7mm)
DCS-50-V-200	2" (50.8mm)	1/2" (12.7mm)
DCS-50-300	3" (76.2mm)	1/2" (12.7mm)
DCS-50-V-300	3" (76.2mm)	1/2" (12.7mm)
DCS-50-400	4" (101.6mm)	1/2" (12.7mm)
DCS-50-V-400	4" (101.6mm)	1/2" (12.7mm)
<hr/>		
DCS-625-50	1/2" (12.7mm)	5/8" (15.9mm)
DCS-625-V-50	1/2" (12.7mm)	5/8" (15.9mm)
DCS-625-75	3/4" (19.1mm)	5/8" (15.9mm)
DCS-625-V-75	3/4" (19.1mm)	5/8" (15.9mm)
DCS-625-100	1" (25.4mm)	5/8" (15.9mm)
DCS-625-V-100	1" (25.4mm)	5/8" (15.9mm)
DCS-625-150	1-1/2" (38.1mm)	5/8" (15.9mm)
DCS-625-V-150	1-1/2" (38.1mm)	5/8" (15.9mm)
DCS-625-200	2" (50.8mm)	5/8" (15.9mm)
DCS-625-V-200	2" (50.8mm)	5/8" (15.9mm)
DCS-625-300	3" (76.2mm)	5/8" (15.9mm)
DCS-625-V-300	3" (76.2mm)	5/8" (15.9mm)
DCS-625-400	4" (101.6mm)	5/8" (15.9mm)
DCS-625-V-400	4" (101.6mm)	5/8" (15.9mm)



© 2008 Pittcon Industries

West

2090 Del Rio Way, Unit B
Ontario, CA 91761
Phone: (909) 773-0001
Fax: (909) 773-0091

3330 W. Flower Street
Phoenix, AZ 85017
Phone: (602) 233-9100
Fax: (602) 233-9400

**Pittcon
Industries**
DIVISION OF PITTCO ARCHITECTURAL METALS, LLC
800 637-7638

East

6409 Rhode Island Ave.
Riverdale, MD 20737
Phone: (301) 927-1000
Fax: (301) 699-8690

FDM SERIES

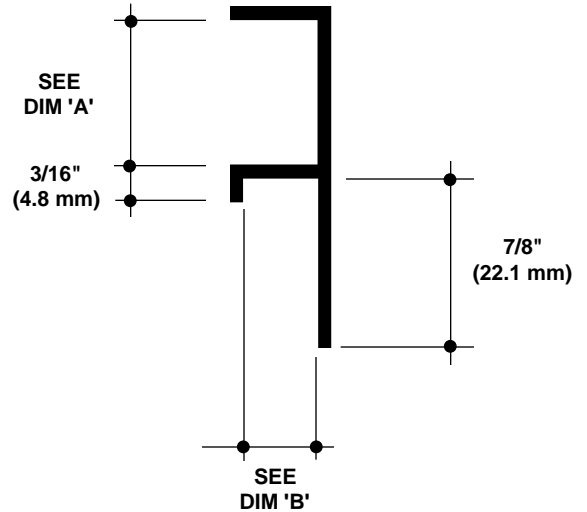
'F' MOLD

Specify as: Pittcon Plaster Molding

Model No. FDM-xx-xxx
FDM-xx-V-xxx (vented)

MATERIAL: Aluminum alloy.....6063 T5
Finish.....Clear Anodized
Thickness......050" nominal

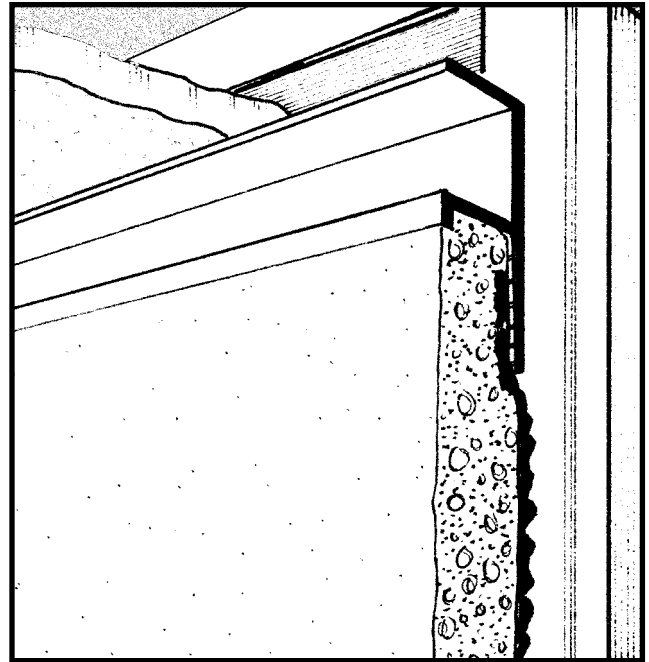
Many optional finishes are available. Consult factory for pricing and availability. Finishes meet or exceed AAMA standards for scratches or blemishes.



NO SCALE

TYPICAL SECTION

Model No.	Width-Dim 'A'	Depth-Dim 'B'
FDM-50-50	1/2" (12.7mm)	1/2" (12.7mm)
FDM-50-V-50	1/2" (12.7mm)	1/2" (12.7mm)
FDM-50-75	3/4" (19.1mm)	1/2" (12.7mm)
FDM-50-V-75	3/4" (19.1mm)	1/2" (12.7mm)
FDM-50-100	1" (25.4mm)	1/2" (12.7mm)
FDM-50-V-100	1" (25.4mm)	1/2" (12.7mm)
FDM-50-150	1-1/2" (38.1mm)	1/2" (12.7mm)
FDM-50-V-150	1-1/2" (38.1mm)	1/2" (12.7mm)
FDM-50-200	2" (50.8mm)	1/2" (12.7mm)
FDM-50-V-200	2" (50.8mm)	1/2" (12.7mm)
<hr/>		
FDM-625-50	1/2" (12.7mm)	5/8" (15.9mm)
FDM-625-75	3/4" (19.1mm)	5/8" (15.9mm)
FDM-625-V-75	3/4" (19.1mm)	5/8" (15.9mm)
FDM-625-100	1" (25.4mm)	5/8" (15.9mm)
FDM-625-V-100	1" (25.4mm)	5/8" (15.9mm)
FDM-625-150	1-1/2" (38.1mm)	5/8" (15.9mm)
FDM-625-V-150	1-1/2" (38.1mm)	5/8" (15.9mm)
FDM-625-200	2" (50.8mm)	5/8" (15.9mm)
FDM-625-V-200	2" (50.8mm)	5/8" (15.9mm)



© 2008 Pittcon Industries

West

2090 Del Rio Way, Unit B
Ontario, CA 91761
Phone: (909) 773-0001
Fax: (909) 773-0091

3330 W. Flower Street
Phoenix, AZ 85017
Phone: (602) 233-9100
Fax: (602) 233-9400

Pittcon Industries
DIVISION OF PITTCOON ARCHITECTURAL METALS, LLC
800 637-7638

East

6409 Rhode Island Ave.
Riverdale, MD 20737
Phone: (301) 927-1000
Fax: (301) 699-8690

TDM SERIES

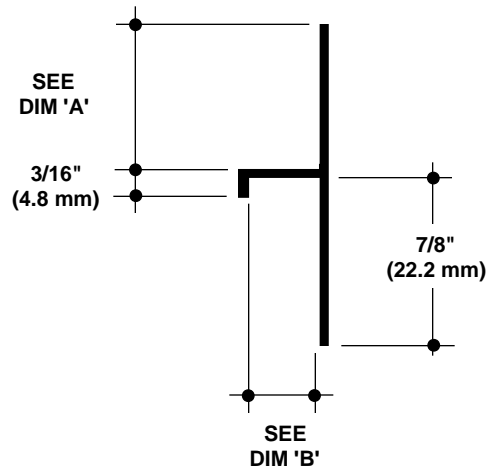
'T' MOLD

Specify as: Pittcon Plaster Molding

Model No. TDM-xx-xxx
TDM-xx-V-xxx (vented)

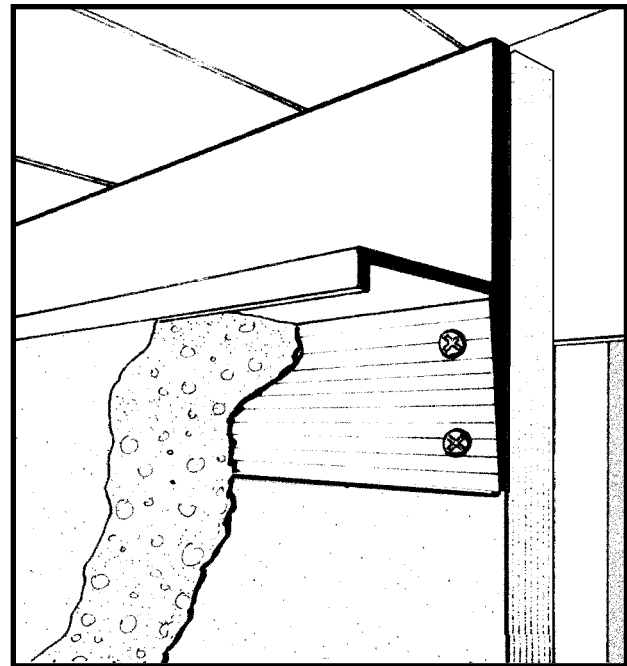
MATERIAL: Aluminum alloy.....6063 T5
Finish.....Clear Anodized
Thickness......050" nominal

Many optional finishes are available. Consult factory for pricing and availability. Finishes meet or exceed AAMA standards for scratches or blemishes.



NO SCALE TYPICAL SECTION

Model No.	Width-Dim 'A'	Depth
TDM-50-50	1/2" (12.7mm)	1/2" (12.7mm)
TDM-50-V-50	1/2" (12.7mm)	1/2" (12.7mm)
TDM-50-75	3/4" (19.1mm)	1/2" (12.7mm)
TDM-50-V-75	3/4" (19.1mm)	1/2" (12.7mm)
TDM-50-100	1" (25.4mm)	1/2" (12.7mm)
TDM-50-V-100	1" (25.4mm)	1/2" (12.7mm)
TDM-50-150	1-1/2" (38.1mm)	1/2" (12.7mm)
TDM-50-V-150	1-1/2" (38.1mm)	1/2" (12.7mm)
<hr/>		
TDM-625-75	3/4" (19.1mm)	5/8" (15.9mm)
TDM-625-V-75	3/4" (19.1mm)	5/8" (15.9mm)
TDM-625-100	1" (25.4mm)	5/8" (15.9mm)
TDM-625-V-100	1" (25.4mm)	5/8" (15.9mm)
TDM-625-150	1.5" (38.1mm)	5/8" (15.9mm)
TDM-625-V-150	1.5" (38.1mm)	5/8" (15.9mm)



© 2008 Pittcon Industries

West

2090 Del Rio Way, Unit B
Ontario, CA 91761
Phone: (909) 773-0001
Fax: (909) 773-0091

3330 W. Flower Street
Phoenix, AZ 85017
Phone: (602) 233-9100
Fax: (602) 233-9400

Pittcon Industries
DIVISION OF PITTCO ARCHITECTURAL METALS, LLC
800 637-7638

East

6409 Rhode Island Ave.
Riverdale, MD 20737
Phone: (301) 927-1000
Fax: (301) 699-8690

JDM SERIES

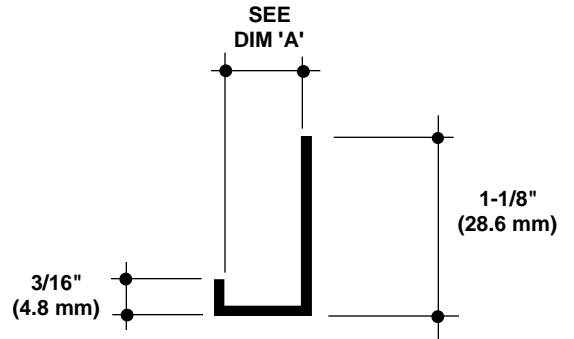
'J' MOLD

Specify as: Pittcon Plaster Molding

Model No. JDM-xx

MATERIAL: Aluminum alloy.....6063 T5
 Finish.....Clear Anodized
 Thickness......050" nominal

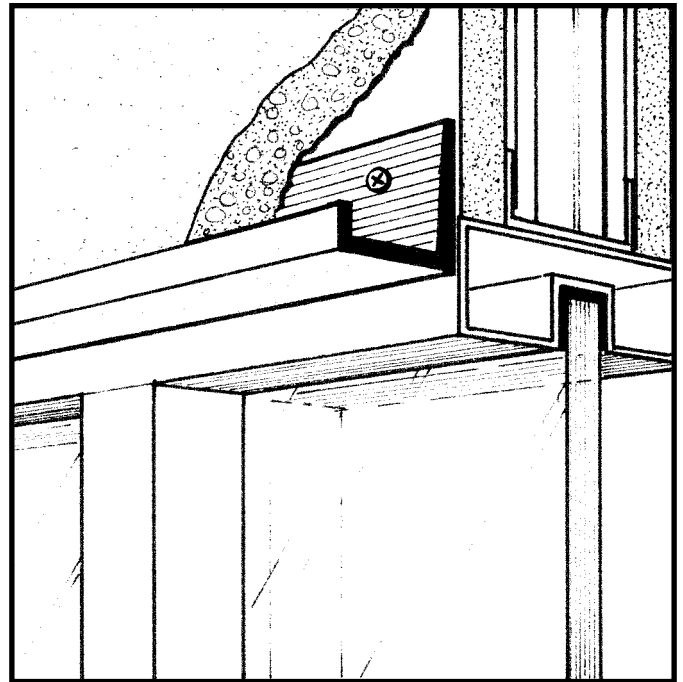
Many optional finishes are available. Consult factory for pricing and availability. Finishes meet or exceed AAMA standards for scratches or blemishes.



NO SCALE

TYPICAL SECTION

Model No.	Depth-Dim 'A'
JDM-50	1/2" (12.7mm)
JDM-625	5/8" (15.9mm)



© 2008 Pittcon Industries

West

2090 Del Rio Way, Unit B
 Ontario, CA 91761
 Phone: (909) 773-0001
 Fax: (909) 773-0091

3330 W. Flower Street
 Phoenix, AZ 85017
 Phone: (602) 233-9100
 Fax: (602) 233-9400

Pittcon Industries
 DIVISION OF PITTCOON ARCHITECTURAL METALS, LLC
800 637-7638

East

6409 Rhode Island Ave.
 Riverdale, MD 20737
 Phone: (301) 927-1000
 Fax: (301) 699-8690

DCS-2 CONTROL

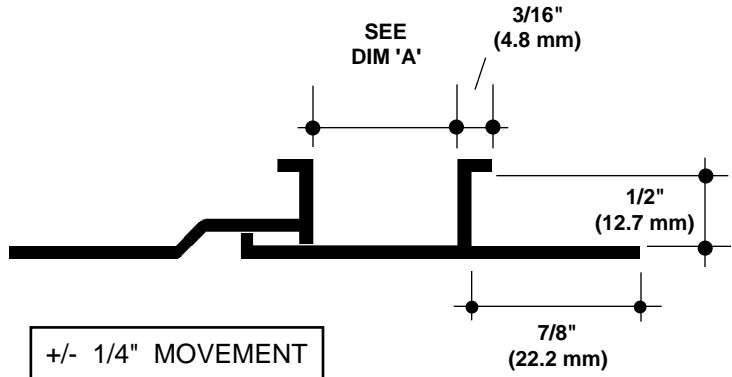
2 PIECE CONTROL SCREED

Specify as: Pittcon Plaster Molding

Model No. DCS-2-50-xxx

MATERIAL: Aluminum alloy.....6063 T5
 Finish.....Clear Anodized
 Thickness......050" nominal

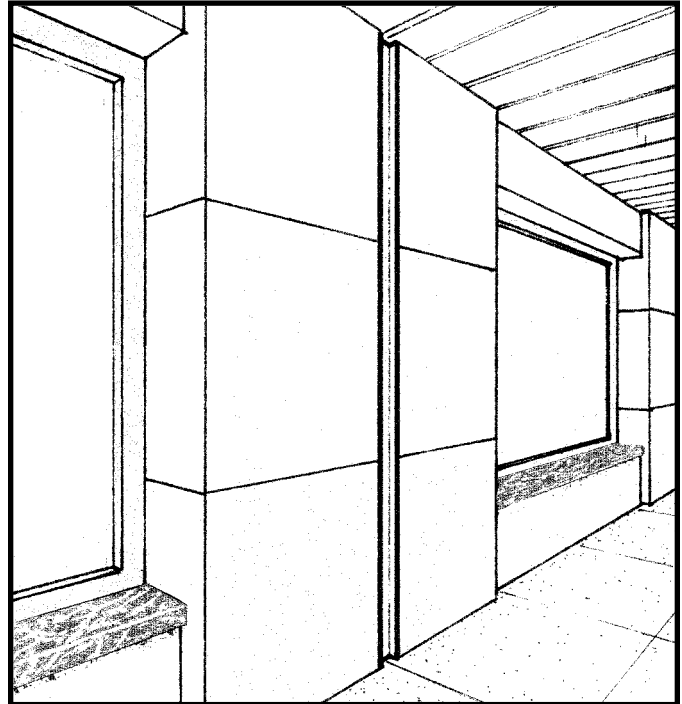
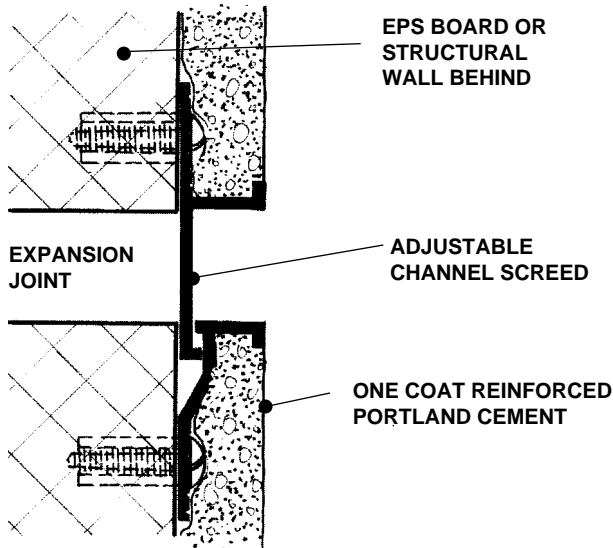
Many optional finishes are available. Consult factory for pricing and availability. Finishes meet or exceed AAMA standards for scratches or blemishes.



NO SCALE

TYPICAL SECTION

Model No.	Width-Dim 'A'	Depth
DCS-2-50-75	3/4" (19.1mm)	1/2" (12.7mm)
DCS-2-50-100	1" (25.4mm)	1/2" (12.7mm)
DCS-2-50-150	1-1/2" (38.1mm)	1/2" (12.7mm)
DCS-2-50-200	2" (50.8mm)	1/2" (12.7mm)



© 2008 Pittcon Industries

West

2090 Del Rio Way, Unit B
 Ontario, CA 91761
 Phone: (909) 773-0001
 Fax: (909) 773-0091

3330 W. Flower Street
 Phoenix, AZ 85017
 Phone: (602) 233-9100
 Fax: (602) 233-9400

Pittcon Industries
 DIVISION OF PITTCO ARCHITECTURAL METALS, LLC
 800 637-7638

East

6409 Rhode Island Ave.
 Riverdale, MD 20737
 Phone: (301) 927-1000
 Fax: (301) 699-8690